

P

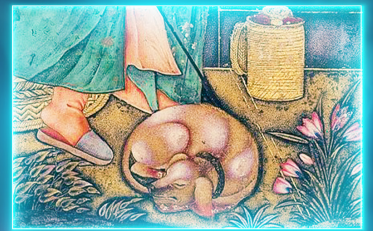
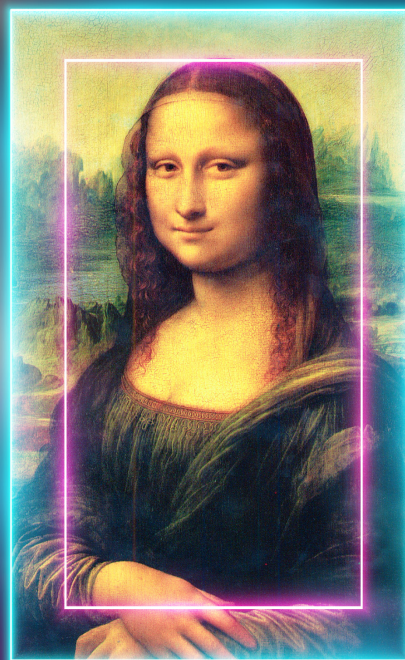
O

P

A

R

T





IN SHORT:

Iconic  
Characters

Extravagant  
Costumes

Insanely Catchy  
Pop Songs

BLURB

It's the new series of *Pop Art*, an annual search for a new icon-in-the-making to join the ever-expanding canon of art. Andy Warhol presents, and the judges are the already famous *Mona Lisa*, Michaelangelo's *God*, *Frida Kahlo* and *Van Gogh*.

This year's contestants range from female artists like *Mary Cassatt* and *Artemesia Gentileschi*, gay artists like *David Hockney*, working class artists like *Lowry*, and black artist *Horace Pippin*, and many more. As they bid for entry to the Canon, the judges have developed 4 intense challenges for the artworks to contend with: '*Naked Art-raction*', '*The Vision*', '*I'm an Artwork, Get Me Out Of Here*' and '*Who Wants To Be An Art Dealer*'.

As twists ensue - and the very foundation of a competition for art is challenged by the sneaky stage-managing *Banksys* - the question looms: who should decide the canon in first place? Shouldn't it be the audience?

Think: Somewhere between *Six*, *Sunday in the Park with George* and a *Chorus Line*.

Music that inspires the show:

Billie Eilish

Becky Hill

Avicii

Hozier

Sam Smith

Rosalia

## WHAT IS IT ABOUT?

### Art's most famous faces

Combining education with entertainment, audiences learn the history behind very famous faces - all with fabulous costumes and catchy tunes.

### Reframing Art History

Art history has traditionally championed a very narrow gaze on humanity - but our story how artists have continually ensured everyone is represented in the canon of art.

### A New Theatrical Form

Taking it's cue from TV talent programmes and competitions, this theatrical twist on the form is innovative pointer in the direction of new forms of live storytelling.

## ABOUT LEO&HYDE

leo&hyde are a Northern musical theatre company, creating award-winning pop musicals. Our debut touring productions *The Marriage of Kim K* and *GUY* toured over 30 venues in the UK including The Lowry, Birmingham Old Rep, The Turbine, Hope Mill Theatre and many others. We pride ourselves on touring the UK, and taking cutting-edge work to towns and cities throughout the country.

We combine ambitious, cutting-edge soundworlds with rich, gettable entertainment. *Pop Art* takes everything we've learned in our first five years of working together to create something bigger than ever - with bolder pop sounds, iconic characters, and a desire to reach a larger audience than any of our show before.

### Quotes for previous leo&hyde shows:



leo&hyde should be attracting the attention of producers and houses up and down the country... they have the ear of today and speak directly to the heart.

BRITISH THEATRE



A dazzling technical achievement... fizzing with inspired ideas.

HOLLYWOOD REPORTER



An outstanding creative triumph... cutting-edge, smart and mind-bending...

THE UPCOMING



# leo & hyde

## Thanks

With thanks to Rural Arts for hosting our Flourish Artists residency in their lovely theatre in Thirsk in January 2022, and to Arts Council England for an R&D grant to develop digital interpretations of our songs.



**GUY**  
a new musical

★★★★★  
THE REVIEWS HUB

★★★★★  
THEATRE BOX

★★★★★  
FAIRY POWERED MAG

★★★★★  
BOYZ

★★★★★  
MANCHESTER THEATRE AWARDS

A gay rom-com for all audiences

An uplifting electronic-pop musical

A heartfelt story of rejection and body image



A fight over the TV remote.

**KARDASHIAN MUSICAL**

**MOZART OPERA**

f @ leoandhyde  
@ marriageofkimk

leo & hyde's  
W.A. Mozart's  
**THE MARRIAGE**  
of  
**KIM K**